

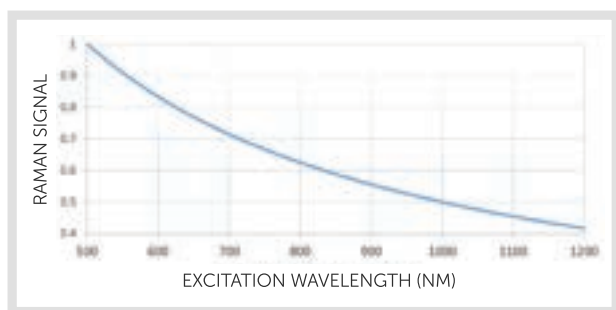
Wavelength Matters

How Choice of Excitation Wavelength Affects Your Raman Spectrum

The beauty of Raman spectroscopy is that any laser wavelength can be used to generate a Raman spectrum, provided sufficient laser intensity is delivered to the sample. But with great power comes great responsibility. With Raman systems available from the UV through NIR, it is difficult to be sure what excitation wavelength will result in the best quality Raman spectrum for a given sample. How can this be determined prior to making a costly investment in a system? Here are a few factors to consider in pursuit of the ideal excitation wavelength (λ_{ex}):

EXCITATION EFFICIENCY

This scales inversely as λ_{ex}^4 , making a good case for visible or even UV excitation. In reality, however, other factors tend to dominate choice of λ_{ex} , from the considerations below to the high cost and short lifetime of compact UV lasers (not to mention the fire hazard!).



OPTICAL FILTERING

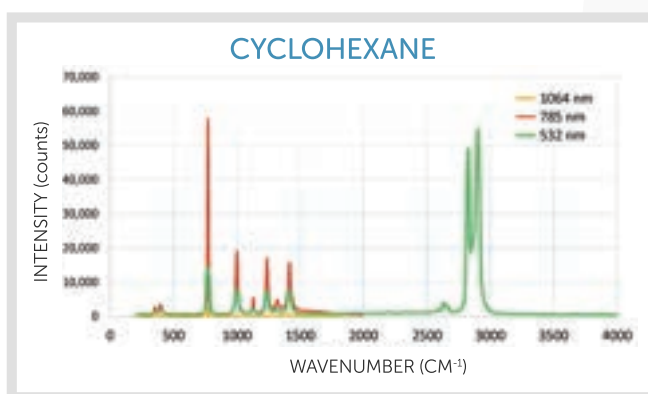
Use of a shorter λ_{ex} will require use of a steeper optical filter to eliminate scattered laser light for samples with Raman peaks of interest that are close to the laser line. For Raman peaks at less than 200-250 cm^{-1} , a custom probe or spectrometer configuration may be needed.

SAMPLE SENSITIVITY

Sample heating can be an issue for longer λ_{ex} , particularly for highly pigmented or darkly colored samples. This can damage the sample, or cause changes in structure for delicate organic or biological samples. Care must also be taken with UV excitation power to avoid sample burning or degradation.

SPECTRAL RANGE & RESOLUTION

A sample's Raman spectrum will cover a smaller wavelength range at shorter λ_{ex} . Raman peak widths will also appear narrower as λ_{ex} decreases, requiring better resolution of the spectrometer to resolve two adjacent Raman peaks. Spectral resolution tends to be more important for research applications than for materials identification, which often looks at the fingerprint region from 200-2000 cm^{-1} .



Sample fluorescence is the #1 deciding factor in selecting Raman excitation wavelength.

Wasatch Photonics offers the expertise & testing to find your optimal Raman solution. Contact us to get started!

LEARN MORE ABOUT
FLUORESCENCE SUPPRESSION >

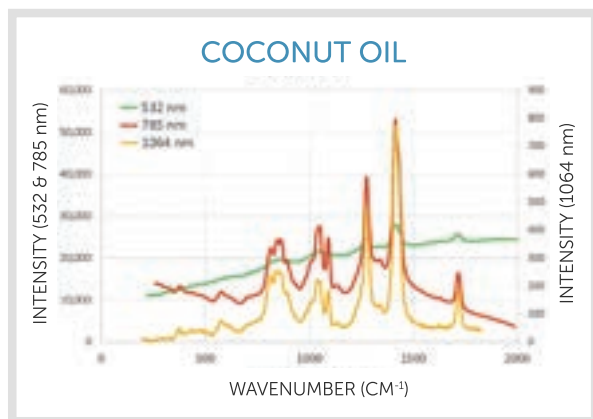
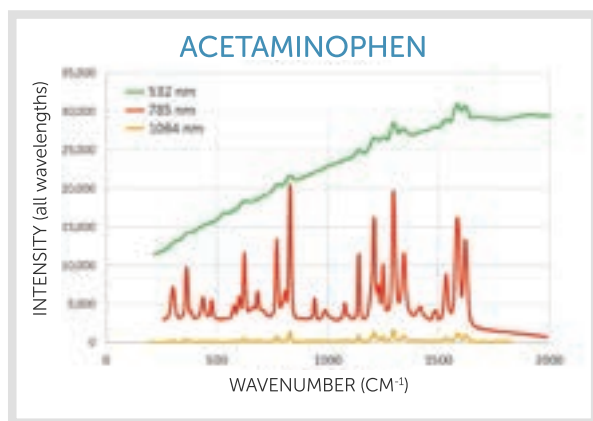
Minimizing Fluorescence

The right excitation wavelength makes all the difference in Raman spectroscopy

Of all the factors to be considered in selecting an excitation wavelength, sample fluorescence is perhaps the most important. Here's why:

A shorter λ_{ex} has a greater chance of exciting an electronic transition in the sample, particularly for organic samples or biomaterials. The result is an increase in background due to fluorescence of the sample. The signal to noise of the spectrum may be decreased, or Raman peaks may not be visible at all above the background. Fluorescence is almost entirely suppressed when using NIR excitation, but system cost increases while sensitivity goes down.

Why not simply subtract fluorescence background? Photobleaching of the sample can cause background fluorescence to decrease over time. While this may seem appealing, it cannot always be done dependably or without altering the sample.



405 & 532 NM: BEST FOR INORGANIC SAMPLES, STRONG SIGNAL

- Carbon nanomaterials, semiconductors
- Metal oxides, minerals, gemstone analysis
- Resonance Raman experiments
- SERS (surface enhanced Raman spectroscopy)

WP 532 ER offers broader spectral range (200-4000 cm^{-1})

635-830 NM: BALANCES SIGNAL WITH FLUORESCENCE IN ORGANICS

- Most chemicals and organic materials
- Pharmaceuticals, narcotics, industrial ingredients
- Biological samples, medical diagnostics
- SERS (surface enhanced Raman spectroscopy)

Three general purpose excitation wavelengths available

1064 NM: BEST FLUORESCENCE SUPPRESSION, LESS SIGNAL

- Edible oils, petrochemicals, polymers
- Inks, pigments, dyes, and varnishes
- Carbon-based and semiconductor materials
- Biological samples, medical diagnostics

Our high throughput spectrometers can dramatically reduce your data collection time

Wasatch Photonics offers the expertise & testing to find your optimal Raman solution. Contact us to get started!

OTHER WAVELENGTH FACTORS >